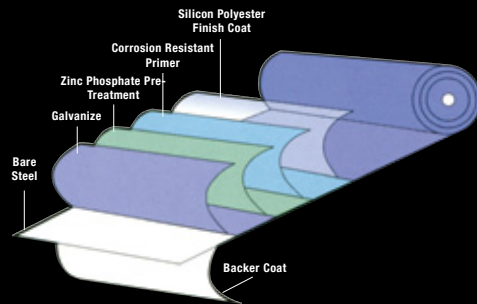




Steel  
Roofing  
and Siding



PAINT WARRANTY



## Features

- 29 Gauge Steel for rugged strength
- Low Maintenance finish resists stains and dirt retention
- Silicon coating for easy cleaning
- Quality paint finish resists chalking and fading

Bright White

White White

Bone White

Stone Grey

Regent Grey

Ivory

Tan

Buckskin

Bright Red

Tile Red

Dark Red

Medium Green

Melchers Green

Whistler Green

Slate Blue

Royal Blue

Heron Blue

Charcoal

Metro Brown

Coffee Brown

Black

## EASY BUILD STEPS

STEP 1



Install base rails

STEP 2



Assemble and position trusses

STEP 3



Attach purlins and girts

STEP 4



Install door and window framing

STEP 5



Attach sidewalls and roofing

STEP 6



Enjoy your new EASY BUILD Garage



ENGINEERED EASY



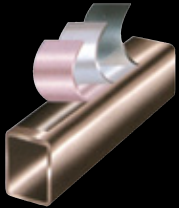
[www.easybuildstructures.ca](http://www.easybuildstructures.ca)

Tel: 604-589-4280 Fax: 604-589-4202



# TUFF TUBING

## Triple Layer Protection



This triple layer protection provides a smooth, shiny product appearance that is unmatched in terms of strength and durability. Our triple coat process resists rust longer than any pre-galvanized or electroplated tubing.

## Smooth Mandrel Bend



Easy Build uses a mandrel bending system for a cleaner look and a stronger bend transition.

## Strong & Durable Steel



Easy Build uses a heavy-duty 2"x3" rectangular galvanized steel tubing with a guaranteed minimum yield strength of 50,000 psi for years of maintenance-free rust-resistant service.

## Easy "SLIP-FIT" Assembly



EASY BUILD'S unique "Slip-Fit" design simplifies the construction process dramatically. Carport kits can be assembled in hours. Garages can be assembled in a weekend. This patented "swaged" assembly technique gives you the ease of assembly plus the strength and durability of steel.

**Engineered for Canadian Winters**

# GARAGES



## Available Sizes

Widths	from 12' to 40' Clear span
Length	20' plus expandable in 4' increments
Height	Sidewall Heights Range from 8' to 16'

Easy Build Garage Kits come complete with one garage door, one pre-hung steel man door, Roof insulation, screws, anchors, and gaskets.

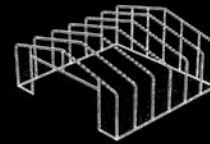
## Standard Garage Doors

Garage Width	Door Width
12' Wide:	9' x 7'
20' Wide:	16' x 7'
24' Wide:	16' x 7' or (2) 9' x 7'
30' Wide:	16' x 7' or (2) 9' x 7'
40' Wide	(2) 12' x 10'

*Other Styles and Sizes Available upon request.*

## Options and Accessories

- Additional Personnel door frame kits available
- Window frame kits available
- Personal steel man doors
- Windows
- Wall Insulation



Easy Build Summit garage packages come complete with the framing system, rolled steel sheeting for roof and walls and custom flashing.

# COMMERCIAL



# PERMANENT/ RETAIL/UTILITY



# TEMPORARY/ FIREHALL/STORAGE

## INDUSTRIAL



## RESIDENTIAL



# CARPORTS



## Available Sizes

Width	12'	14'	18'	20'	24'	30'
Length	20' plus expandable in 4' increments					
Height	8'	9'	10'	11'	12'	

## Options and Accessories

- Back enclosure frame kit available (available in 12', 14', 18', 20', 24', 30' widths)
- Front enclosure frame kit available (available in 12', 14', 18', 20', 24', 30' widths)
- Height extensions (allow you to raise the height of your carport in 1' increments up to 12')

Easy Build carports/equipment covers can be quickly installed on most any surface- grass, gravel, asphalt or concrete. The carport kits are also available in a variety of size configurations to accommodate most any equipment from a compact car to a large RV.

